

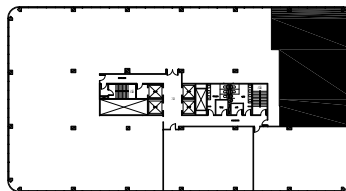
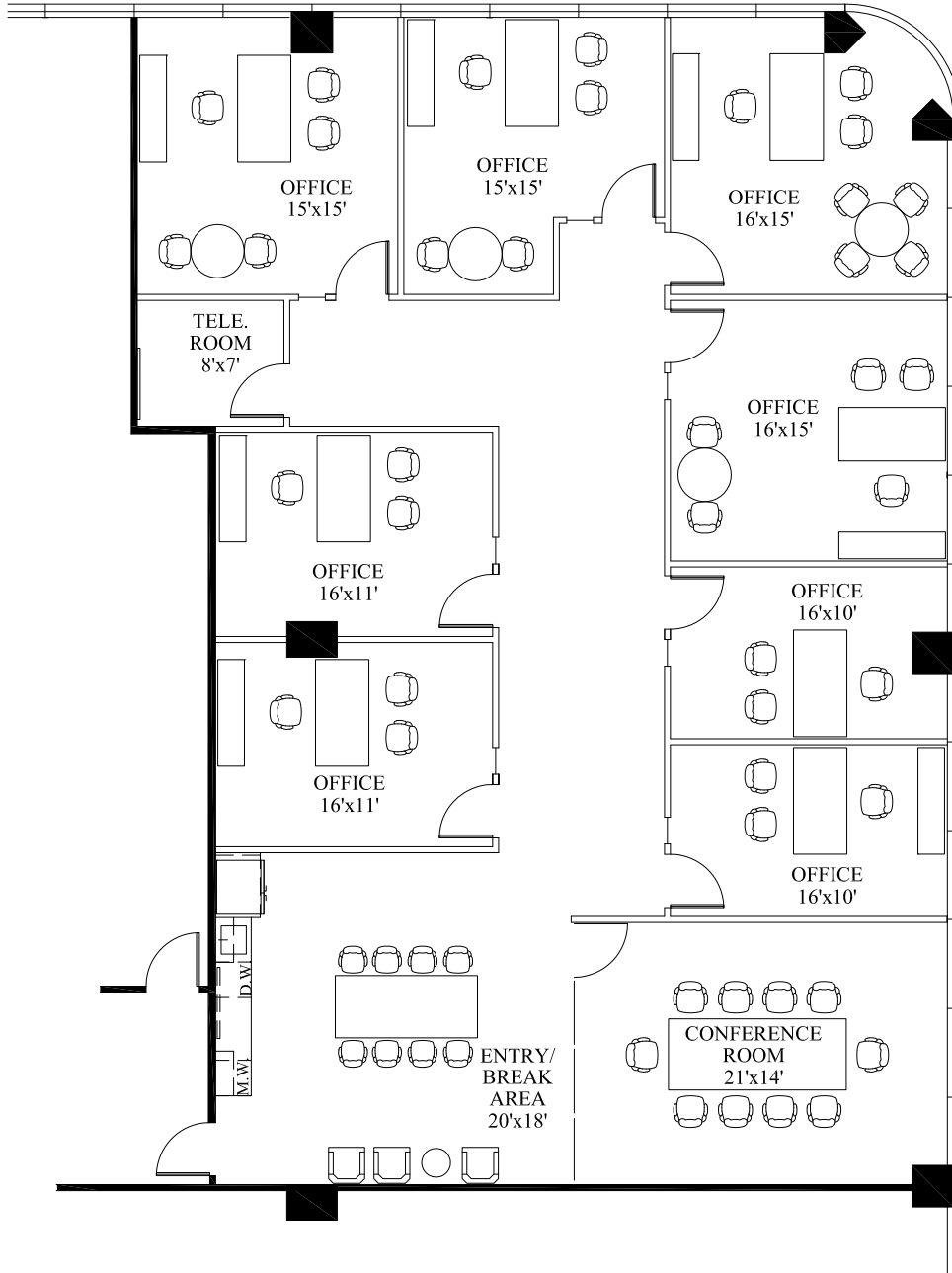
PRESTONWOOD TOWER

5151 Belt Line Road - Dallas, Texas

SUITE 1005

TENANT: SPECULATIVE

3,286 RSF



— EXISTING WALLS TO REMAIN
= NEW WALLS

10TH FLOOR

Scale: 3/32"=1'-0"

All dimensions and square footages are approximate.

December 5, 2019

